

Lemons

Music and Lyrics by Alicia Jo Rabins/Girls in Trouble

Grunge rock feel ♩=c.166

4x, or repeat ad lib.

G Optional Intro

E



Half-time feel



I held a le-mon I was think-ing of you I took a



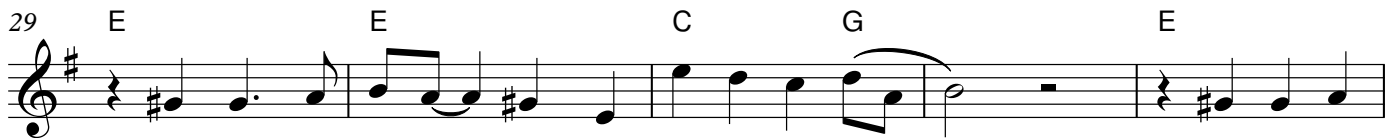
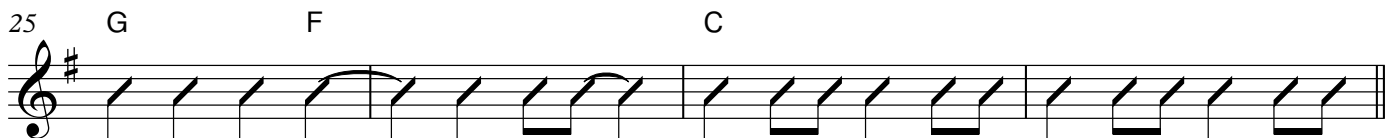
knife and cut the le-mon in two I kept on cut-ting 'til I



start-ed see-ing blood It felt much bet-ter than this im-pos-si-ble



love



You act so in-no-cent, you act so de-mure But I can



feel you breath-ing un-der my door I think you want me just a



ti-ny lit-tle bit I think you won-der how our two bod-ies would

44 G F C
 fit

Musical staff 44-48 in G major. Measures 44-48 contain a melodic line with a slur over measures 44-46 and a rhythmic accompaniment of eighth notes. Chords G, F, and C are indicated above the staff.

49 G F C E

Musical staff 49-54 in G major. Measures 49-54 contain a rhythmic accompaniment of eighth notes. Chords G, F, C, and E are indicated above the staff.

55 G#m A
 If my hair should turn in - to -

Musical staff 55-59 in G major. Measures 55-59 contain a melodic line with a key signature change to G#m in measure 57. Chords G#m and A are indicated above the staff.

60 E G#m
 a thou - sand tin - y tongues Your name would

Musical staff 60-65 in G major. Measures 60-65 contain a melodic line with a key signature change to G#m in measure 62. Chords E and G#m are indicated above the staff.

66 A B
 be ring - ing from the tip of ev - 'ry one I

Musical staff 66-72 in G major. Measures 66-72 contain a melodic line. Chords A and B are indicated above the staff.

73 C#m E A
 wish that I could fall a - sleep a hun - dred thou - sand mi -

Musical staff 73-78 in G major. Measures 73-78 contain a melodic line. Chords C#m, E, and A are indicated above the staff.

79 F#m E A E
 - les deep

Musical staff 79-85 in G major. Measures 79-85 contain a melodic line. Chords F#m, E, A, and E are indicated above the staff.

86 E

Musical staff 86-90 in G major. Measures 86-90 contain a rhythmic accompaniment of eighth notes. Chord E is indicated above the staff.

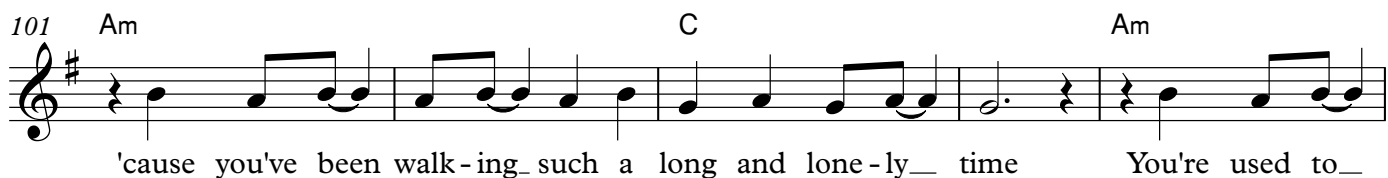
91 E C G
 My neck is iv - o - ry my mouth is a well

Musical staff 91-95 in G major. Measures 91-95 contain a melodic line. Chords E, C, and G are indicated above the staff.

96 E C G
 Come here and drink from me I swear I won't tell

Musical staff 96-100 in G major. Measures 96-100 contain a melodic line. Chords E, C, and G are indicated above the staff.

101 Am C Am



'cause you've been walk-ing such a long and lone-ly time You're used to_

106 G F



wa-ter_ and I'm of-fer-ing you wine_

111 C G F C



116 E E C G



I wrote a let-ter_ and I gave it to you_

121 E E C G Am



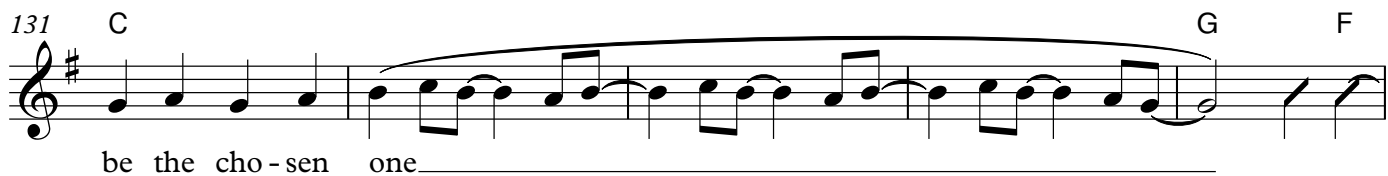
but you re-fused to read it all the way through_ And now you're

126 C Am



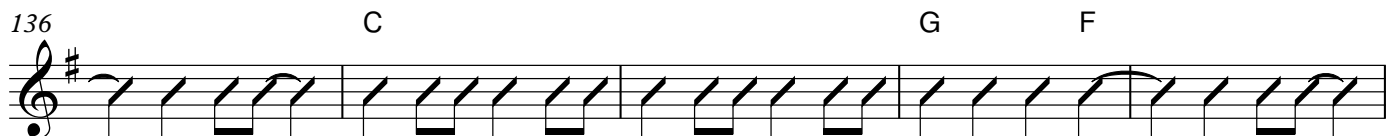
run-ning just as fast as you can run Some-times it's_ dan-ger - ous to

131 C G F




be the cho-sen one_

136 C G F



141 C G F



145 C G F

